



4671

Features

- 10µA Ultra High Resolution
- Large Conductor Diameter (30mm)
- AC Current in 5 Ranges (40mA, 400mA, 4A, 40A, 60A)
- Wide Frequency Response (40Hz~1KHz)
- AC A, AC V, Ω and Continuity
- Large 3½ Digit LCD (4000 Count)
- 40 Segment Fast Bargraph Display (30 times/sec.)
- Data Hold and Max/Min Hold
- Relative Measurement
- 600 Vrms Overload Protection in Resistance Range

General Specifications

Jaw Opening	Cable Dia 30mm. max. (approx.)
Battery Type	Two 1.5V SUM-3
Display	3½ LCD with 40 Segment Bargraph
Range Selection	Manual
Overload Indication	OL
Power Consumption	15mA (approx.)
Low Battery Indication	B
Sampling Time	3 time/sec. (display) 30 time/sec. (bargraph)
Operating Environment	-10 ⁰ to 50 ⁰ C, RH < 85%
Storage Environment	-20 ⁰ C to 60 ⁰ C, RH < 75%
Altitude	up to 2000M
Dimensions	210 x 72 x 36 mm
Weight	210gms Including Battery(approx.)
Accessories	Carrying Case x 1, Users Manual x 1, Battery (installed), Test Leads x 1 pair

Specifications (23⁰C ±5⁰C)

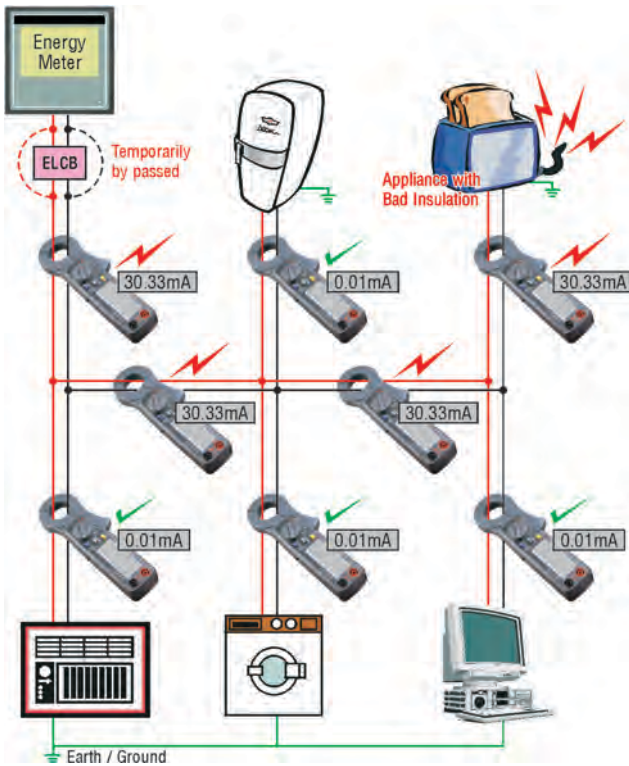
AC Current		Accuracy	
Range	Resolution	50/60 Hz	Wide (40Hz~1KHz)
40 mA	10 µA	±1.0%rdg ± 3dpts	±2.0%rdg ± 5dpts
400 mA	100 µA		
4 A	1 mA		
40 A	10 mA		
60 A (0~50A)	100 mA	±1.5%rdg ± 3dpts	±3.0%rdg ± 5dpts
60 A (50~60A)	100 mA	±3.0%rdg ± 5dpts	±3.5%rdg ± 5dpts

Though the Meter can Display upto 400A, the Calibration is valid upto 60A

Resistance (Ω) and Continuity (Open Voltage 0.4V)				
Range	Resolution	Accuracy	Beeping	OL Protection
40~400Ω	0.1Ω	±1.0%rdg ± 2dpts	<38.0Ω	AC 600V

AC Voltage (Input Impedance : 10 MΩ)				
Range	Resolution	Accuracy		Overload Protection
		50/60 Hz	40~1KHz	
400V	0.1V	±1.5%rdg ± 2dpts	±2.0%rdg ± 4dpts	AC 800V

Fault Tracing of Live Installation



Application

