

**Moving Coil Educational Desk Stand Meters**

MECO Educational Desk Stand Meters are ideal for laboratory use. These meters are made of an unbreakable ABS desk stand with two or three terminals and fitted with MR65, MR100, CR65 or CR100 meters.



**MR65EDM**



**MR100EDM**

Model	MR65EDM (DC)	MR100EDM (DC)
Accuracy	±2.5% of Full Scale	±1.5% of Full Scale
Scale Length	68mm	80mm

Ranges	MR65EDM / MR100EDM
Microamps	0-100µA to 0-1000µA
Milliamps	0-1mA to 0-1000mA
Amps	0-1A to 0-30A
Millivolts	0-50mV to 0-1000mV
Volt	0-1V to 0-1000V
Galvanometer	30-0-30 G or 50-0-50 G with 2 µA/Div or 20 µA/Div

Note : Dual ranges available subject to technical feasibility.



**CR65EDM**

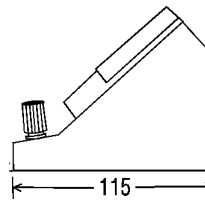
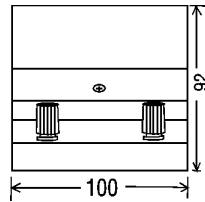


**CR100EDM**

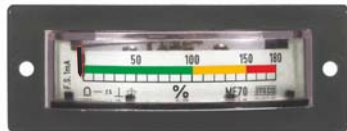
Model	CR65EDM (AC)	CR100EDM (AC)
Accuracy	±2.5% of Full Scale	±1.5% of Full Scale
Scale Length	68mm	80mm

Ranges	CR65EDM / CR100EDM
Microamps	----
Milliamps	0-1mA to 0-1000mA
Amps	0-1A to 0-5A
Millivolts	----
Volt	0-10V to 0-1000V
Galvanometer	----

**Dimension (mm)**



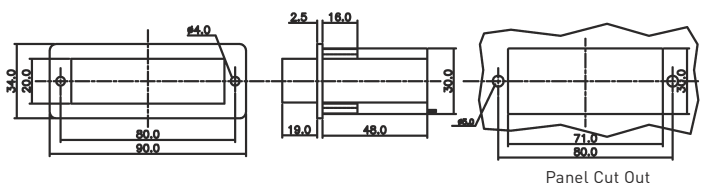
**Moving Coil Panel Meters**



**DC : ME70, AC : CE70**

- Casing** : Clear transparent Polycarbonate Cover
- Accuracy** : ±2.5% of Full Scale
- Ranges & details** : Similar to models MR60 and CR60, Current Range max. 1.5 A
- Scale Length** : 52mm

**Dimensions (mm)**

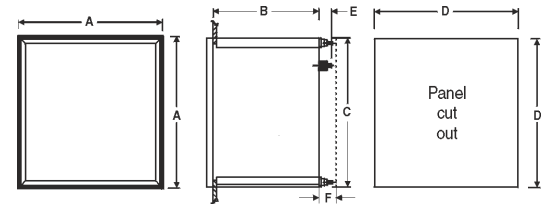


MODELS	SCALE LENGTH (mm)	REFER DRAWING	A	B	C	D	E	F	EXT. BOX # DRAWING
SQ72 (VOLTMETER & AMMETER UPTO 20A)	64	1	72	51.5	67	68	17	19	-
SQ72 (AMMETER ABOVE 20A)	64	1	72	51.5	67	68	23	19	-
M72,F72,C72, (72QF11,31)	60	1	72	37	66	68	13	19.5	5
72QW11,31,32,33, (72QV11,31,32,33)	60	1	72	37	66	68	13	19.5	4
72LW11,31,32,33, (72LV11,31,32,33)	110	1	72	37	66	68	13	22	4
ML72,MLC72 (Voltmeter),72LF11(#),72LF31(#),FL72(#)	110	1	72	37	66	68	13	22	-
MLC72 (Ammeter)	110	1	72	62	66	68	16	18	-
SQ96 (VOLTMETER & AMMETER UPTO 20A)	97	1	96	51.5	90	92	17	19	-
SQ96 (AMMETER ABOVE 20A)	97	1	96	51.5	90	92	23	19	-
M96 (Above 10A, E=18)	90	1	96	30	90	92	13	19.5	-
96QW11,31,32,33, (96QV11,31,32,33)	90	1	96	102	90	92	16	12	-
96LW11,31,32,33, (96LV11,31,32,33), 96LF11,31,FL96	155		-						
C96,96QF11,31,F96,M96 (4-20mA DC)	90	1	96	48	90	92	13	19.5	-
ML144,MLC144,144LF11,31,FL144	230	1	144	54	136	138	4	19	-
144QF11,31,F144	140	1	144	66	136	138	16	14	-
144QW11,31,32,33 (144QV11,31,32,33)	140	2	144	116	136	138	-	-	-
144LW11,31,32,33 (144LV11,31,32,33)	230	2	144	103	136	138	-	-	-
ML110,MLC110,110LF11,31,FL110	175	3	----As Per Drawing----						-
110LW,11,31,32,33, (110LV11,31,32,33)	175	3	----As Per Drawing----						4
ML96/MLC96 (Above 10A, E=18)	155	1	96	48	90	92	13	22	-

MODELS	SCALE LENGTH (mm)	REFER DRAWING	A	B	C	D	E	F	G	H	I	J	L	O	R	EXT. BOX # DRAWING
MR60,CR60	57	6	60	60	33	24	48	48	51.5	12	-	-	54	4BA	4.5	5 (CR60)
MR65,CR65	68	6	81	81	33	22	64	64	64	12	-	-	67	4BA	4.5	5 (CR65)
MR100,CR100	80	6	100	80	34	21	84	64	63	12	-	7	67	4BA	4.5	5 (CR100)
MR120,CR120	96	6	120	100	38	25	100	80	65	12	-	16	67	4BA	4.5	5 (CR120)

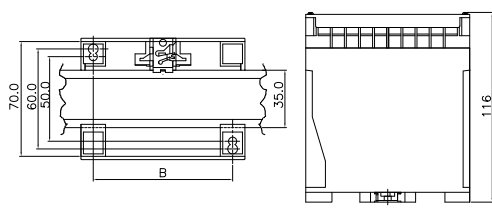
## Dimensions (mm)

**1**

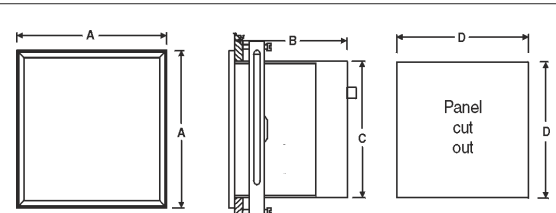


**4** Dimension of DIN Series Power Line Transducers

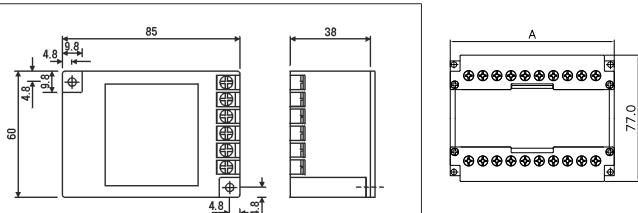
Case Size	A	B
I	75	60
II	100	85
III	150	135



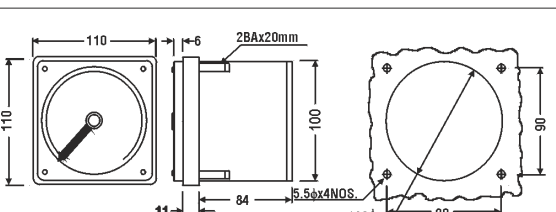
**2**



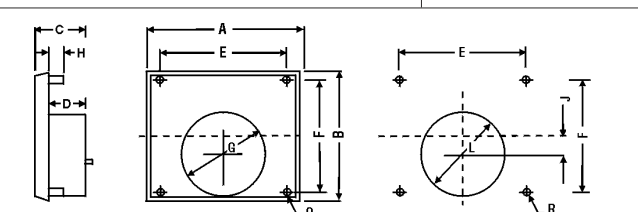
**5**



**3**



**6**



**Note :** # For ranges greater than 100 mA & upto 5A AC use Models CR60, CR65, CR100, CR120, 72LF11,72LF31,FL72 & C72 with External CT Box supplied with the instruments (Drawing 5).