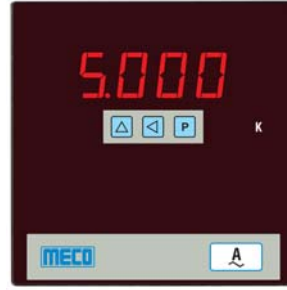




SMP35SN - Ammeter



SMP35SN - Voltmeter



SMP9635SN - Ammeter



SMP9635SN - Voltmeter

Features

- 1A / 5A Input in same Meter (User Selectable)
- High Accuracy Across the Entire Range
- 9999 Count High Resolution Display
- Dual Aux. 110V AC and 230V AC in same Meter
- User Programmable Display / CTP / PTR
- Auto Selection of Decimal Point
- Auto Indication of KV & KA
- Setup / Programming Protected by Password

Specifications

- | | | | |
|-------------------------------|---|-----------------------------------|--|
| ● Measuring Method | TRMS using Microcontroller | ● Frequency Response | 45 - 65Hz |
| ● Display Type | Red LED Super Bright Display | ● Environmental Conditions | 0 to 55°C, < 70% RH (Operation)
-10 to 70°C, < 70% RH (Storage)
27°C ± 5°C (Calibration) |
| ● Maximum Display | 4 Digit / 9999 Counts | ● Dielectric Strength | 2.5 kV at 50Hz for 1 min. between Input - Auxiliary & Case - Terminals |
| ● Overload Indication | - OL - | ● Impulse Withstand | 3.5kV, 1.2 / 50 μ s |
| ● Underload Indication | - UL - | ● Case / Housing Material | Black ABS, Dimension as per DIN 43700 |
| ● Resolution | 0.001 to 1 Count Depending on Range | ● Faceplate / Lens | Red Antiglare Faceplate with Annunciators |
| ● Sampling Rate | 3 Samples / Second | ● Connectors | Terminal Block : Thermoplastic (UL 94V-0) with Tin Plated Brass Terminals |
| ● Maximum Overload | Voltage : 1.2 times continuous
Current : 2 times continuous | ● Display Stability | Within ± 2 Digits |
| ● Mounting Clamps | Sturdy, Derline (Engineering plastic) | | |
| ● VA Burden (Typical) | Auxiliary : < 7VA
Voltage Input : < 0.6VA
Current Input : < 0.5VA | | |

Model	Input AC	Range (any one only)	Programmable Display / CTP / PTR	Dual Aux. Supply	Accuracy	Digits (max.)	Display Digit Height
				110 and 230V AC	± (0.5% FSD + 2 dgts)	4	0.56" / 14.2mm
SMP35SN	V	5 - 750V AC	1 - 9999	✓	✓	✓	✓
SMP9635SN	A	For 1A Range : 0.080 - 1.200A AC For 5A Range : 0.200 - 6.000A AC	1 - 9999 5 - 9999	✓	✓	✓	✓

Dimensions (mm)		
Model	SMP35SN	SMP9635SN
Front	48 x 96	96 x 96
Depth (Behind Bezel)	88	38
Panel Cut-Out	44 ^(+0.5, -0.0) x 92 ^(+0.8, -0.0)	92 ^(+0.8, -0.0) x 92 ^(+0.8, -0.0)

Ordering Information for Ammeter: Model

Ordering Information for Voltmeter: Model

Terminal Connection

