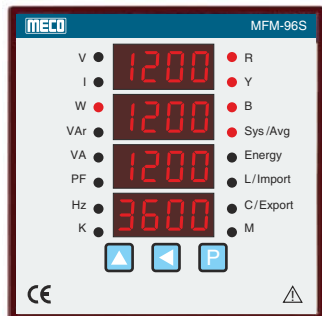
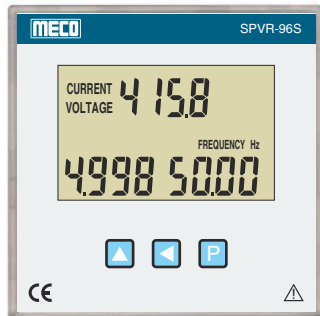




Micro
Controller
Based



MFM-96S



SPVR-96S



MFM-DIN RAIL

Features

- 10 Parameters, 48 Values on 16 Pages (MFM-96S)
- 10 Parameters, 50 Values on 34 Pages (SPVR-96S & MFM-DIN RAIL)
- TRMS Measurement
- 3 Phase 3 Wire / 3 Phase 4 Wire (User Selectable)
- CTR, PTR, Inst. Address, Password & Energy Reset (Programmable)
- Energy Import - Export (4 Quadrant Operation)
- POWER MASTER Software (Optional)
- RS485 Port, 5KV Isolated with MODBUS RTU Protocol (Optional)
- CE Compliance as per EN61010-1, EN61326-1
- Inbuilt Memory to Store CTR, PTR, Inst. Address & Password
- Auto / Manual Scroll Display (Programmable)
- Energy Retention
- Energy Reset Programmable Parameters (Password Protected)

Parameters Measured	Accuracy ±(%FS)	Phase	System
Voltage	± 0.5%	V1N, V2N, V3N, V12, V23, V31	V (System)
Current	± 0.5%	I1, I2, I3	I (Average)
Active Power	± 1.0%	W1, W2, W3	W (System)
Reactive Power	± 1.0%	Var1, Var2, Var3	Var (System)
Apparent Power	± 1.0%	VA1, VA2, VA3	VA (System)
Frequency	± 0.2 Hz	NA	Hz (System)
Power Factor	± 1° Electrical	PF1, PF2, PF3	PF (System)
Active Energy	Class 1	KWh1, KWh2, KWh3	Kwh Total (Import) & Kwh Total (Export)
Reactive Energy		KVarh1, KVarh2, KVarh3	KVarh Total (IND.) & KVarh Total (CAP.)
Apparent Energy		KVAh1, KVAh2, KVAh3	KVAh Total

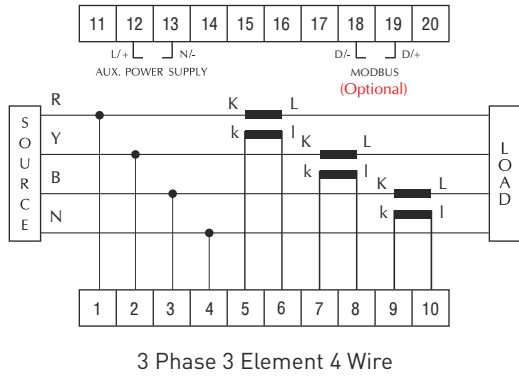
Specifications

Auxiliary Supply	85 - 265VAC / DC (Standard)	Current I/P	< 0.2 VA / Phase					
	19 - 90VAC / DC (Optional)		System	3P2E3W / 3P3E4W (User Selectable)				
Voltage / Phase	51 - 300VAC (Max.) (PH-N)	Standard	Installation Category	CAT II (IEC / EN61010 - 1)				
	16 - 138VAC (Max.) (PH-N)			Pollution	Degree 2 (IEC / EN61010 - 1)			
	88 - 519VAC (Max.) (PH-PH)					Environment	Calibration	27°C ±5°C
	28 - 239VAC (Max.) (PH-PH)							Operating
Current / Phase	0.03A to 1.2A (Max.)	Storage	Terminal Block	Screw Type				
	0.110A to 6A (Max.)			Dielectric Strength	2.5KV at 50 Hz for 1 min.			
Frequency	45 - 55Hz	Insulation Resistance	> 20 MOhms at 500VDC					
Power Factor	0.300 Lag (L) - 1.000 - 0.300 Lead (C)							
VA Burden (Typical)								
Auxiliary	< 3 VA							
Voltage I / P	< 0.3 VA / Phase							

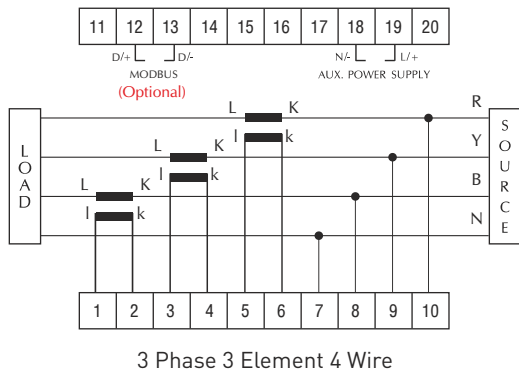
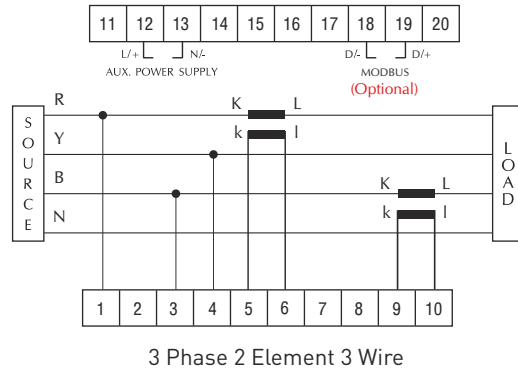
* Dimension (mm)

Model	MFM-96S / SPVR-96S	MFM-DIN RAIL
Front	96 x 96	115 (L) x 96(W) x 60(D)
Depth (Behind Bezel panel)	43	
Cut - out	92 ^(+0.8,-0.0) x 92 ^(+0.8,-0.0)	
Case / Housing Material	DIN Black ABS, Dimension as per DIN 43700	ABS Gray
Mounting	Panel	DIN RAIL (35mm)
Mounting Clamps	Sturdy, Moulded Derlin with Suitable Hardware	
Terminals / Connectors	Terminal Block : Thermo Plastic (UL94V-0) with Tin Plated Brass Terminal	

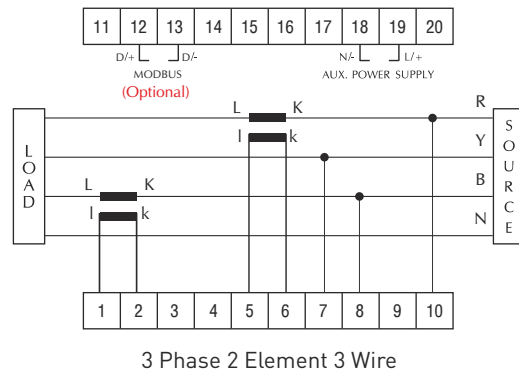
Terminal Connection



SPVR-96S
MFM-96S



MFM-DIN RAIL



Ordering Information: Model, Input Voltage, Input Current, Input Frequency, System 3P3E4W / 3P2E3W, CTR / PTR (if any), Auxiliary Supply & RS485 MODBUS Communication Port (Optional)

POWER MASTER Software

3 Phase Multifunction Meter

MECO[®]
SINCE 1962

MFM-96S **SPVR-96S** **MFM-DIN RAIL**

Measurement Parameters

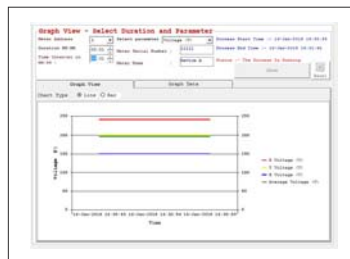
- Voltage ● Current ● Active Power ● Reactive Power ● Apparent Power
- Frequency ● Power Factor ● Active Energy ● Reactive Energy ● Apparent Energy

- In MFM-96S 10 Electrical Parameters, 48 Electrical Values on 16 Pages
- In SPVR-96S & MFM-DIN RAIL 10 Electrical Parameters, 50 Electrical Values on 34 Pages
- Power Master Software & RS485 Port, 5KV Isolated with MODBUS RTU Protocol.
- Energy Retention, Energy Reset & Password for Protection of Programmable Parameters

www.mecoinst.com



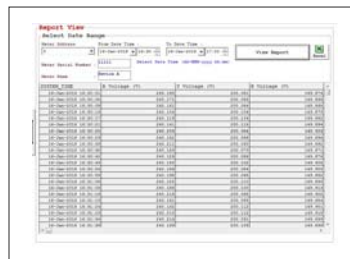
REAL TIME DISPLAY



GRAPH DISPLAY



HISTORY TREND



REPORT VIEW DISPLAY