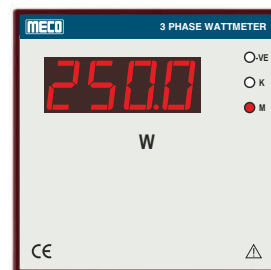




DWM96 / DWM144



DVM96 / DVM144



DWM963534S

### Specifications

- |                       |   |                         |   |
|-----------------------|---|-------------------------|---|
| ● Measuring Method    | Multiplication of Pulse Width and Pulse Height  | ● Dielectric Strength   | 2.5 kV at 50Hz for 1 min. between Case - Terminals  |
| ● Sampling Rate       | 2.5 Samples per Second  | ● Polarity Indication   | " - " is Displayed to indicate Export of Power  |
| ● Display Type        | Red LED (Standard)  | ● Case/Housing Material | DIN Black ABS, Dimension as per DIN 43700   |
| ● Resolution          | 0.001 to 1 depending on range for 3½ digit<br>0.0001 to 1 depending on range for 4½ digit                           | ● Mounting Clamps       | Sturdy, Moulded ABS with Hardware   |
| ● Maximum Overload    | Voltage : 1.2 times continuous<br>Current : 2 times continuous  | ● Connectors            | For 96x96mm (Detachable Connectors)<br>For 144x144mm (Terminal Block) of Thermoplastic (UL 94V-0) with Tin Plated Brass Terminals |
| ● VA Burden (Typical) | Auxiliary : < 5VA<br>Voltage Input : < 0.5VA, < 5VA for R Phase in Self Powered<br>Current Input : < 0.5 VA / Phase | ● Faceplate / Lens      | Red Antiglare Faceplate with Annunciators   |
| ● Environment         | Calibration : 27°C ± 5°C,<br>Operating : 0 to 50°C, RH < 70%<br>Storage : -10 to 60°C, RH < 70%                     | ● Note                  | Digital Watt /Var Meters with External Transducer Against Inquiry   |
| ● Over Range          | " 1 " or " -1 "   | ● Display Stability     | Within ± 2 Digits   |

Model	Input (Nominal) A = 1, 2 or 5A AC PF 0.3 Lag - 1 - 0.3 Lead Hz = 50Hz	Auxiliary Power Supply (Any One Only)				Accuracy Class		Digits (max.)		Bi Directional		Display Digit Height	
		110/ 230V AC	85-265 VAC/DC	48 / 110/ 220V DC	Self Powered	0.5	1.0	3½	4½	Input	Display	0.56" / 14.2mm	1.0" / 25.4mm
DWM963511 DVM963511	1P 1E 2W	✓	-	-	✓	✓	✓	-	✓	✓	✓	-	
DWM963531 DVM963531	3P 1E 2W (Balanced Load)	✓	-	-	✓	✓	✓	-	✓	✓	✓	-	
DWM963533 DVM963533	3P 2E 3W (Balanced & Unbalanced Load)	✓	-	-	✓	✓	✓	-	✓	✓	✓	-	
DWM963534S DVM963534S	3P 3E 4W (Balanced & Unbalanced Load)	✓	✓	✓	-	✓	✓	-	✓	✓	✓	-	
DWM1444511 DVM1444511	1P 1E 2W	✓	-	✓	✓	-	✓	-	✓	✓	-	✓	
DWM1444531 DVM1444531	3P 1E 2W (Balanced Load)	✓	-	✓	✓	-	✓	-	✓	✓	-	✓	
DWM1444533 DVM1444533	3P 2E 3W (Bal. & Unbal. Load)	✓	-	✓	✓	-	✓	-	✓	✓	-	✓	
DWM1444534 DVM1444534	3P 3E 4W (Bal. & Unbal. Load)	✓	-	✓	✓	-	✓	-	✓	✓	-	✓	

**V Range = ± 20% of Nominal; A Range = 20 - 120% of Nominal**  
**For 1P1E2W : 63.5 / 110 / 230 V (P-N); For 3P1E2W : 110 / 440 V (P-P);**  
**For 3P2E3W / 3P3E4W : 110 / 440 V (P-P)**

Standard : As per IS 13875

**Dimensions (mm)**

Model	DWM9635 DVM9635	DWM963534S DVM963534S	DWM14445 DVM14445
Front	96 x 96	96 x 96	144 x 144
Depth (Behind Bezel)	135	43	59
Panel Cut-Out	92 <sup>(+0.8, -0.0)</sup> x 92 <sup>(+0.8, -0.0)</sup>	92 <sup>(+0.8, -0.0)</sup> x 92 <sup>(+0.8, -0.0)</sup>	138 <sup>(+0.8, -0.0)</sup> x 138 <sup>(+0.8, -0.0)</sup>

**Ordering Information:** Model, Input Voltage, Input Current, Input Frequency, CTR / PTR (if any), Scale Display, Auxillary Supply, Accuracy Class, Digits, Uni or Bi-Directional Input & Display Digit Height

<p>DWM9611, DVM9611</p>	<p>DWM14411, DVM14411</p>	<p>* DPF72x14411</p>
<p>DWM9631, DVM9631</p>	<p>DWM14431, DVM14431</p>	<p>* DPF72x14431</p>
<p>DWM9633, DVM9633</p>	<p>DWM14433, DVM14433</p>	<p>* DPF14411</p>
<p>DWM9634S, DVM9634S</p>	<p>DWM14434, DVM14434</p>	<p>* DPF14431</p>

**\*Note :**  
For Terminal Connection of DPF72x14411, DPF14411, DPF72x14431, DPF14431 Please Refer Page of 4 Digit Digital Power Factor Meter (with Built-in Transducer)