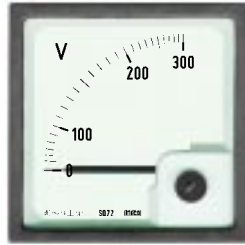




Interchangeable Scale



SQ72



SQ96

**Model**

Description  
 Movement Type  
 Accuracy  
 Self Consumption  
 Operating Voltage  
 Test Voltage  
 Construction & Design  
 Scale  
 Case/Housing Material  
 Bezel  
 Glass Faceplate  
 Mounting Fasteners/Clamps

Temperature Conditions

Front Protection  
 Terminal Protection

**SQ72, SQ96**

Moving iron meter of 90° deflection with interchangeable scale facility  
 Moving iron spring-mounted jewel bearing suspension  
 ± 1.5% of full scale as per IS 1248; EN 60051 (IEC51)  
 Ammeters (upto 5A AC) ≤ 0.6VA; Voltmeters (upto 500V AC) ≤ 5VA  
 600V RMS max.  
 2.5KV for 1 minute at 50 Hz  
 According to IS 1248; IEC51  
 According to DIN 43802  
 White ABS, dimensions as per DIN 43700  
 Black ABS, dimensions as per DIN 43718  
 Flat Glass. Antiglare and Polycarbonate (shatter proof) on request.  
 Ergonomic easy mountable clamps and nuts for easy installation on  
 Switchboards, Panels, Mosaics etc.  
 - 10°C to + 55°C, RH < 90% (Operating) and  
 - 20°C to + 70°C, RH < 90% (Storage) EN60051 (IEC51)  
 IP52 protection as per IS2147. IP54 (optional)  
 Back cover for IP20 terminal protection as per IS2147 (optional)

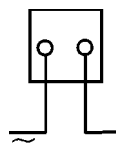
Dimension and Panel Cutout	Ammeters						Voltmeters		
	1 x In (A)		2 x In (A)		6 x In (A)		with PT		
	Direct	with CT	Direct	with CT	Direct	with CT	Direct	Ratio and Scale	
	1A	CTR/5A	1/2A	CTR/5A	1/6A	CTR/5A			
	5A	CTR/1A	5/10A	CTR/1A	5/30A	CTR/1A	50V	PTR/63.5V	
	10A	10/—	10/20A	10/20/—	10/60A	10/60/—	60V	PTR/110V	10KV/—
	15A	15/—	15/30A	15/30/—	15/90A	15/90/—	75V	PTR/230V	15KV/—
	20A	20/—	20/40A	20/40/—	20/120A	20/120/—	100V	PTR/250V	20KV/—
	25A	25/—	25/50A	25/50/—	25/150A	25/150/—	110V	PTR/400V	25KV/—
	30A	30/—	30/60A	30/60/—	30/180A	30/180/—	150V	PTR/440V	30KV/—
	40A	40/—	40/80A	40/80/—	40/240A	40/240/—	250V		40KV/—
	50A	50/—	50/100A	50/100/—	50/300A	50/300/—	300V	1KV/—	50KV/—
	60A	60/—	60/120A	60/120/—	60/360A	60/360/—	500V	1.2KV/—	60KV/—
	75A	75/—	75/150A	75/150/—	75/450A	75/450/—	600V	1.5KV/—	75KV/—
	80A	100/—	80/160A	100/200/—	80/480A	100/600/—	750V	2KV/—	80KV/—
	100A	150/—	100/200A	150/300/—	100/600A	150/900/—		2.5KV/—	100KV/—
			250/—	250/500/—		250/1500/—		3KV/—	and higher
			400/—	400/800/—		400/2400/—		3.5KV/—	
		500/—	500/1000/—		500/3000/—		4KV/—		
		600/—	600/1200/—		600/3600/—		5KV/—		
		1000/—	1000/2000/—		1000/6000/—		6KV/—		
		1500/—	1500/3000/—		1500/9000/—		7.5KV/—		
		and higher	and higher		and higher		8KV/—		

**Ordering Information :** Model, Input Range, CTR/PTR, Scale

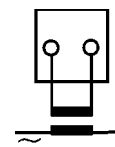
**Notes**

- a) Double stamping/non-standard marking available
- b) Gaskets (optional) for vibration proof available
- c) Terminal protection cover (optional) on request for Voltmeter & Ammeter upto 20 A
- d) Red, Yellow, Blue & White bezel on request
- e) AC instruments normally calibrated @ 50Hz. 400Hz on request
- f) Other ranges subject to technical feasibility

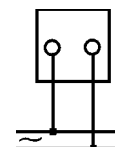
**Wiring Diagram**



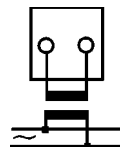
Ammeter with direct connection



Ammeter with CT



Voltmeter with direct connection



Voltmeter with PT