



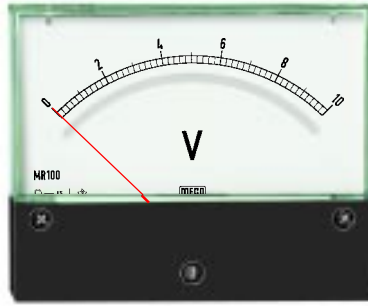
Rectangular AC and DC Panel Meters



MR60, CR60



MR65, CR65



MR100, CR100



MR120, CR120

Model	MR60, MR65, MR100, MR120	CR60, CR65, CR100, CR120
Description	DC Ammeters and Voltmeters	AC Ammeters and Voltmeters
Movement Type	Moving coil, central magnetic core, spring mounted bearing jewel suspension	Moving coil, central magnetic core, spring mounted bearing jewel suspension with rectifier circuit.
Accuracy	± 1% of Full Scale for MR120 ± 1.5% of Full Scale for MR100 ± 2.5% of Full Scale for MR60, MR65	± 1.5% of Full Scale for CR100, CR120 ± 2.5% of Full Scale for CR60, CR65
Sensitivity	1000Ω / V (Voltmeter) 200Ω / V (Ammeter)	1000Ω / V (Voltmeter) 200Ω / V (Ammeter)
Operating Voltage	600 V RMS max.	600 V RMS max.
Test Voltage	2.5 KV for 1 minute at 50 Hz	2.5 KV for 1 minute at 50 Hz
Frequency	—	45Hz to 1KHz (Volt), 45-100Hz (Amp)
Construction & Design	According to I.S. 1248; IEC 51	According to I.S. 1248; IEC 51
Scale	According to DIN 43802	According to DIN 43802
Case	ABS	ABS
Dimensions and Panel cutout	Refer Dimensions	Refer Dimensions

DC Ranges : MR Series

Ammeters *				Voltmeters				
μA	mA		A*	On shunt		mV	V	
	1 mA	50 mA	1 A	—A/60 mV	50A/75 mV	50 mV	1 V	50 V
	1.5 mA	60 mA	1.5 A	—A/75 mV	60A/75 mV	60 mV	1.5 V	60 V
	2 mA	75 mA	2 A	—A/100 mV	75A/75 mV	75 mV	2 V	75 V
100 μA	2.5 mA	100 mA	2.5 A		100A/75 mV	100 mV	2.5 V	100 V
150 μA	4 mA	150 mA	4 A		150A/75 mV	150 mV	4 V	150 V
250 μA	5 mA	250 mA	5 A	5A/75 mV	250A/75 mV	250 mV	5 V	250 V
400 μA	6 mA	400 mA	6 A	6A/75 mV	400A/75 mV	400 mV	6 V	400 V
500 μA	10 mA	500 mA	10 A*	10A/75 mV	500A/75 mV	500 mV	10 V	500 V
600 μA	15 mA	600 mA	15 A	15A/75 mV	600A/75 mV	600 mV	15 V	600 V
	20 mA		20 A	20A/75 mV			20 V	
	25 mA		25 A	25A/75 mV			25 V	
	30 mA		30 A	30A/75 mV			30 V	
	40 mA		40 A	40A/75 mV			40 V	
			50 A					

* MR60 direct upto 10A DC only. Above 10A use with external shunt.

AC Ranges : CR Series

Ammeters @						Voltmeters				
1 x In (A)		2 x In (A)		6 x In (A)		On PT				
Direct	On CT	Direct	On CT	Direct	On CT	Direct	Ratio and Scale			
	(-) (5A or 1A)		(-) (5A or 1A)		(-) (5A or 1A)		-V/63.5 V			
1 A	10/- 100/-	1/2 A	10/20/- 100/200/-	1/6 A	10/60/- 100/600/-	10 V 100 V	-V/110 V	2 KV	10 KV	
5 A	15/- 150/-	5/10 A	15/30/- 150/300/-	5/30 A	15/90/- 150/900/-	15 V 150 V	-V/230 V	2.5 KV	15 KV	
	20/- 250/-		20/40/- 250/500/-		20/120/- 250/1500/-	20 V 250 V	-V/250 V	3 KV	20 KV	
	25/- 400/-		25/50/- 400/800/-		25/150/- 400/2400/-	25 V 400 V	-V/400 V	3.5 KV	25 KV	
	30/- 500/-		30/60/- 500/1000/-		30/180/- 500/3000/-	30 V 500 V	-V/440 V	4 KV	30 KV	
	40/- 600/-		40/80/- 600/1200/-		40/240/- 600/3600/-	40 V 600 V		5 KV	40 KV	
	50/- 1000/-		50/100/- 1000/2000/-		50/300/- 1000/6000/-	50 V	1 KV	6 KV	50 KV	
	60/- 1500/-		60/120/- 1500/3000/-		60/360/- 1500/9000/-	60 V	1.2 KV	7.5 KV	60 KV	
	75/- and higher		75/150/- and higher		75/450/- and higher	75 V	1.5 KV	8 KV	75 KV	

@ From 100mA to 5A AC, use with External CT Box, supplied with the instrument.

Ordering Information : Model, Input range, Scale

- Notes : a) Double stamping/non-standard/centre zero marking available. b) Zero suppressed DC ammeter for 4-20mA and voltmeter for 5-10V available.
c) Voltmeters with sensitivity 10 K Ohms/V available d) Other ranges available subject to technical feasibility