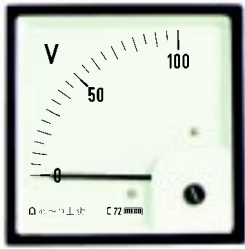




AC Moving Coil Rectifier Type DIN Panel Ammeters and Volt Meters



C72, C96



MLC72, MLC96, MLC144



MLC110

Model	C72, C96	MLC72, MLC96, MLC144, MLC110
Description	Moving Coil measuring instruments with AC rectifier; Full Scale deflection 90°	Moving coil measuring instruments with AC rectifier; Full Scale deflection 240°
Movement Type	Moving-coil with central magnetic Core; spring-mounted bearing jewel suspension	Moving-coil with central magnetic Core; spring-mounted bearing jewel suspension
Accuracy	± 1.5% of Full Scale	± 1.5% of Full Scale for MLC96, MLC144, MLC110, ± 2.5% of Full Scale for MLC72
Sensitivity	1000Ω/V (Voltmeter) 200Ω/V (Ammeter)	-
Operating Voltage	600 V RMS max.	600 V RMS max.
Test Voltage	2.5 KV for 1 minute at 50 Hz	2.5 KV for 1 minute at 50 Hz
Self-Consumption	< 1 VA	< 1 VA
Frequency range	15 to 100 Hz	45 Hz to 1KHz (Voltmeter), 45 to 100Hz (Ammeter) 1KHz to 10KHz (Voltmeter - Optional)
Construction & Design	According to I.S. 1248; IEC 51	According to I.S.1248; IEC 51
Scale	According to DIN 43802	According to DIN 43802
Case	ABS	ABS
Dimensions and Panel cutout	Refer Dimensions	Refer Dimensions

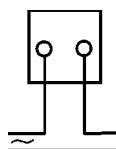
Ammeters						Voltmeters		
1 x In (A)		2 x In (A)		6 x In (A)		On PT		
Direct	On CT	Direct	On CT	Direct	On CT	Direct	Ratio and Scale	
1A	(-)	1/2 A	(-)	1/6 A	(-)			
5A	(5A or 1A)	5/10A	(5A or 1A)	5/30 A	(5A or 1A)	10 V	-V/63.5 V	10 KV
	10/-		10/20/-		10/60/-	15 V	-V/110 V	15 KV
	15/-		15/30/-		15/90/-	20 V	-V/230 V	20 KV
	20/-		20/40/-		20/120/-	25 V	-V/250 V	25 KV
	25/-		25/50/-		25/150/-	30 V	-V/400 V	30 KV
	30/-		30/60/-		30/180/-	40 V	-V/440 V	40 KV
	40/-		40/80/-		40/240/-	50 V	1 KV	50 KV
	50/-		50/100/-		50/300/-	60 V	1.2 KV	60 KV
	60/-		60/120/-		60/360/-	75 V	1.5 KV	75 KV
	75/-		75/150/-		75/450/-	100 V	2 KV	100 KV
	100/-		100/200/-		100/600/-	150 V	2.5 KV	
	150/-		150/300/-		150/900/-	250 V	3 KV	
	250/-		250/500/-		250/1500/-	400 V	3.5 KV	
	400/-		400/800/-		400/2400/-	500 V	4 KV	
	500/-		500/1000/-		500/3000/-	600 V	5 KV	
	600/-		600/1200/-		600/3600/-	750 V	6 KV	
	1000/-		1000/2000/-		1000/6000/-	1000 V	7.5 KV	
	1500/-		1500/3000/-		1500/9000/-		8 KV	
	and higher		and higher		and higher			

Ordering Information : Model, Input, CTR/PTR, Scale

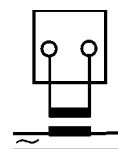
Notes

- a) Double stamping/non-standard marking available.
- b) Rectifier type meters calibrated for AC sine wave
- c) Rubber gaskets for vibration proof available
- d) AC instruments normally calibrated at 50 Hz.
- e) Other ranges available subject to technical feasibility.

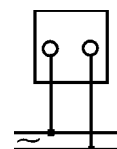
Wiring Diagram



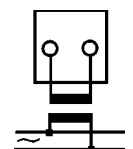
Ammeter (direct)



Ammeter on CT



Voltmeter (direct)



Voltmeter on PT