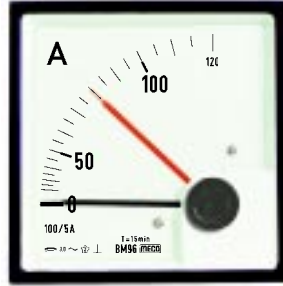
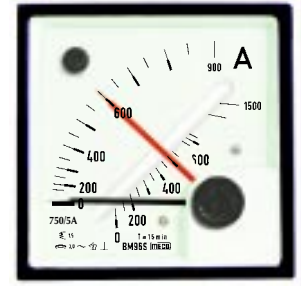




Maximum Demand / Bimetallic Ammeters



BM96



BM96S

Model	BM96 Maximum Demand Ammeter		BM96S Maximum Demand Ammeter with Moving Iron	
Function	Maximum 		Maximum and Instantaneous 	
Front Frame	mm	96x96		
Housing	mm	90x90		
Mounting Depth	mm	72		
Scale and Pointer	Coarse / Fine Divisions - Standard Pointer DIN Type			
Material of Cover	Plastic (ABS), White			
Material of Base	Glass Filled Plastic (ABS), Black			
Material of Window	Glass (Standard), Plexi-Glass (Optional)			
Weight (approx)	gm	230	275	
Measuring Range	0-5A or 0-1A, Scale upto 120% of Rated Current for Bimetal. For Higher Range use External CT's		0-5A or 0-1A, Scale upto 120% of Rated Current for Bimetal. 0-5A or 0-1A Scale upto 200% of Rated Current for Moving Iron Meter For Higher Range use External CT's	
Response Time (T)	min	15 for Bimetal Ammeter (standard) 20 min. (Optional)		15 for Bimetal Ammeter (Standard) 20 min. (Optional) Instantaneous for Moving Iron Meter
Scale Length	mm	90 for Maximum Demand Ammeter 60 for Moving Iron Meter		
Frequency	50/60 Hz			
Burden (approx)	VA	2.5		3.5
Accuracy	± 3% of FS for Bimetal Meter ± 1.5% of FS for Moving Iron			
Insulation Resistance	Over 20 MΩ at 500 VDC for 1min			
Breakdown Voltage	2KV AC, 50Hz for 1 min			

Principal of Operation

The bimetal movement responds and indicates the mean current loading over a specified period of time (T); say 15min. A black pointer which is attached to the bimetal spiral moves in response to the current (heating) in bimetal spiral. A red pointer (slave pointer or memory pointer) is driven by the black pointer. Red pointer remains at the maximum position to which the black pointer has reached during any period of time. Further when the loading is reduced, the red pointer remains at the maximum value. This enables the operator to know the maximum loading of the system without continuously watching the instrument.

A reset knob is provided on top of the instrument to bring back the red pointer to the position of the black pointer. A sealing/locking facility is also provided on the reset knob to prevent tampering of the reading at the red pointer. For locking use 0.5mm Ø wire. A protective back-cover for operator safety & easy to use mounting clamps are provided as standard accessories.

In type BM96S, moving iron meter is also fitted in the opposite corner to get the instantaneous reading of the load current.

Scale Example

For CTR	100/5A	Rated Current	Bimetalic Scale	Instantaneous Scale
A) BM96	5A	120 A (120%)	-	
B) BM96S	5A	120 A (120%)	200 A (200%)	

Standard Ranges

Following standard ranges are available for ___/5A CTR or ___/1A CTR
 10A, 40A, 50A, 60A, 75A, 80A, 100A, 125A, 150A, 200A, 250A, 300A, 400A 500A, 600A, 700A, 750A, 800A, 1000A, 1200A, 1250A, 1500A, 1600A, 2000A, 2500A, 3000A, 4000A

Other ranges subject to technical specifications

Ordering Information

Model, CT ratio, Response Time (t)