



Features

- Non Contact Ground Resistance Measurement
- No Auxiliary Electrodes Needed
- Recording / Memory Function
- 0.025Ω ~ 1500Ω
- Suitable for Ground Wire upto Φ 23mm (Model 4680)
- Suitable for Ground Wire upto Φ 35mm (Model 4680B)
- Leakage Current (0.200mA ~ 15.00A) (Model 4680)
- Leakage Current (0.200mA ~ 35.00A) (Model 4680B)
- Auto Range
- Continuity Loop Test

General Specifications

- Jaw Opening : 25mm approx (Model 4680)
38mm approx (Model 4680B)
- Battery Type : 9V, Eveready Type 216 or equivalent
- Display : 4 Digit 9999 Counts LCD
- Range Selection : Auto
- Overload Indication : OL
- Power Consumption : 40mA
- Low Battery Indication :
- Sampling Time : 0.5 sec
- Operating Environment : 0° ~ 50°C, RH < 85%
- Storage Environment : -20°C ~ 60°C, RH < 75%
- Storage Humidity : < 75% RH
- Dimensions : 276(H)x100(W)x47(D) mm
- Weight : 750gm approx.
- Accessories : Resistance Calibration Plate - 1, 9V Battery - 1, User Manual - 1
Carry Box - 1, Cleaning Brush - 1



Electrical Specifications (23°C ± 5°C)

Ground Resistance (Auto Range)		
Range	Resolution	Accuracy of Reading ¹
0.025 - 0.250 Ω	0.002 Ω	± (1.5%rdg + 0.02Ω)
0.250 - 1.000 Ω	0.02 Ω	± (1.5%rdg + 0.02Ω)
1.001 - 9.999 Ω	0.02 Ω	± (1.5%rdg + 0.1Ω)
10.00 - 50.00 Ω	0.04 Ω	± (1.5%rdg + 0.1Ω)
50.01 - 99.99 Ω	0.04 Ω	± (1.5%rdg + 0.5Ω)
100.0 - 200.0 Ω	0.4 Ω	± (3.0%rdg + 1.0Ω)
200.1 - 400.0 Ω	2 Ω	± (5.0%rdg + 5Ω)
400.1 - 600.0 Ω	5 Ω	± (10%rdg + 10Ω)
600.1 - 1500 Ω	20 Ω	± 20%rdg

1. Loop resistance non inductive, external field < 200A/m, external electrical field < 1V/m, conductor centered.
2. Resistance Measurement Frequency : 3.333KHz

Continuity : Beep if Resistance < 40.00Ω (approx.)

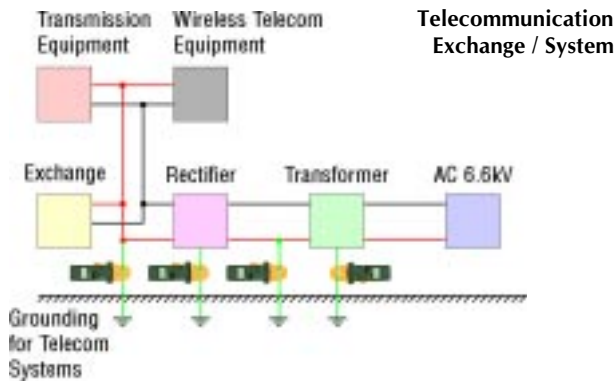
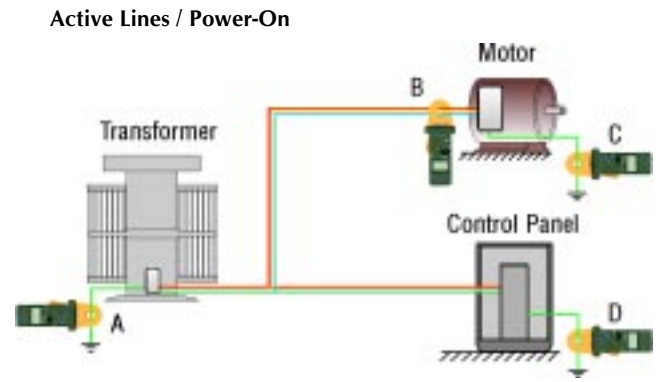
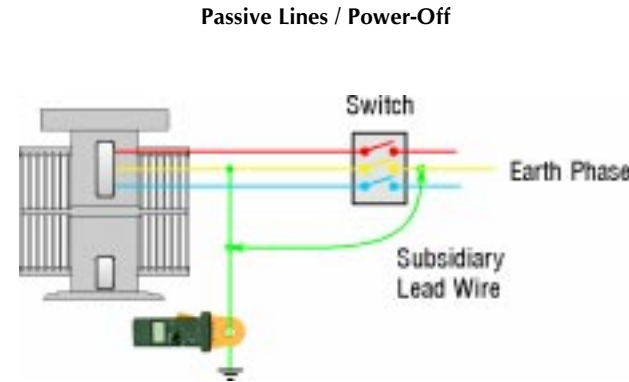
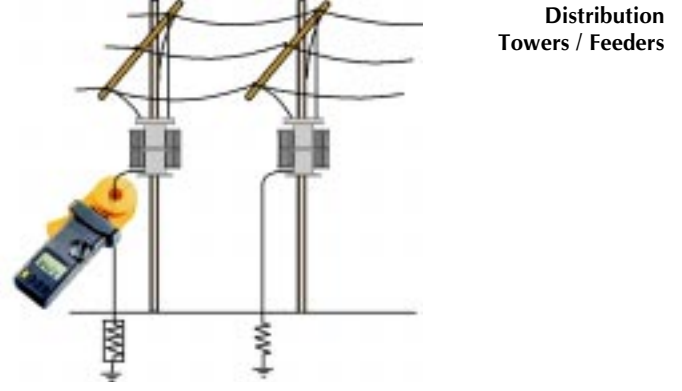
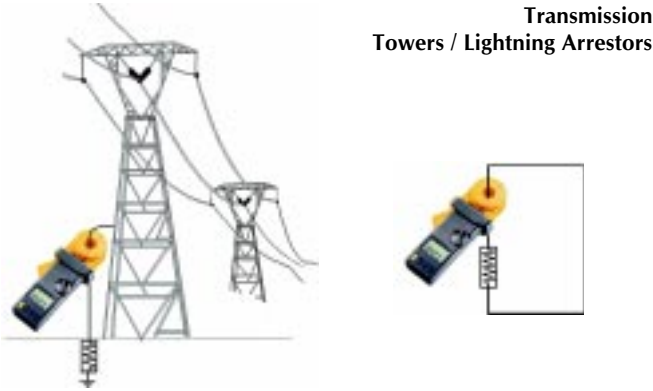
Ground & Leakage Current (Auto Range 50/60Hz, TRMS, Crest Factor < 3.5)		
Range	Resolution	Accuracy of Reading
0.200 - 1.000 mA	0.001 mA	± (2.0%rdg + 0.05mA)
1.00 - 10.00 mA	0.01 mA	± (2.0%rdg + 0.03mA)
10.0 - 100.0 mA	0.1 mA	± (2.0%rdg + 0.3mA)
100 - 1000 mA	1 mA	± (2.0%rdg + 3mA)

Current Overload Protection : 100A Continuous, 200A (< 60 sec.) 50/60Hz

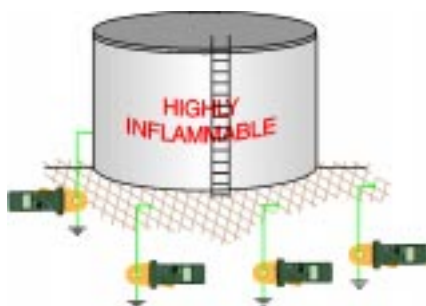
Ground & Leakage Current (50/60Hz, TRMS, Crest Factor < 3.5)		
Range	Resolution	Accuracy of Reading
0.200 - 4.000A	0.001A	± (2.0%rdg + 0.03A)
4.00 - 35.00A	0.01A	± (3.0%rdg + 0.03A)

Applications

Hazards due to improper earth / ground happen around us everyday. Systems are becoming more and more complex and faults in any system are unavoidable. Every electrical equipment, appliance or network must be properly earthed to allow a low resistance path for dissipation of leakage current into the earth. MECO Clamp-On Earth / Ground Resistance Tester can measure accurately within a few minutes the ground resistance & AC current (load & leakage) of all types of installations by just clamping to the grounding lines without disconnecting the circuit or driving auxiliary electrodes. A few of the applications have been illustrated below :



Hazardous Storage Tanks for Petrol / Oil / Gas / Chemicals



Household Electrical Appliances

