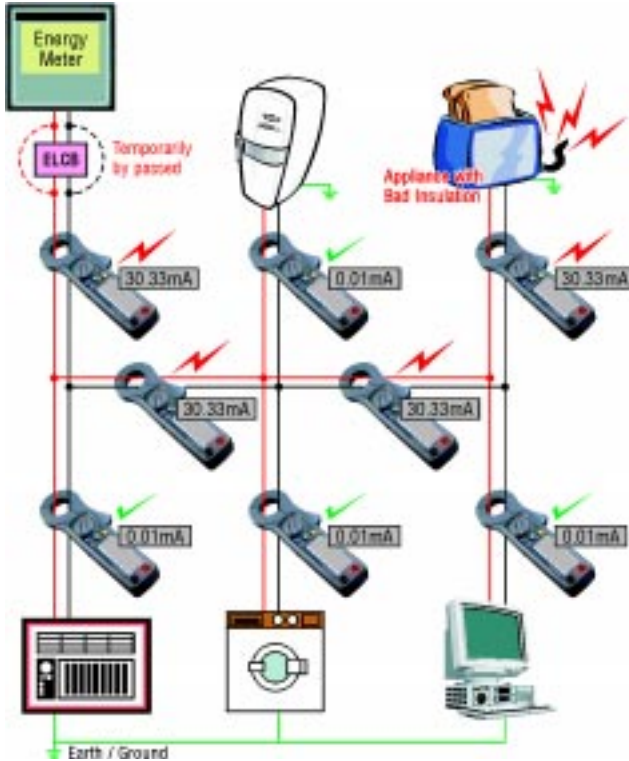




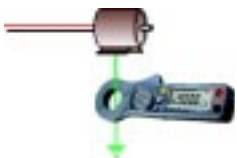
4671

Fault Tracing of Live Installation

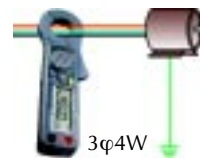
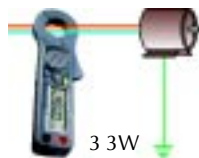
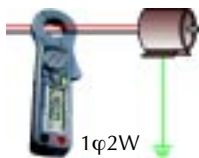


Application

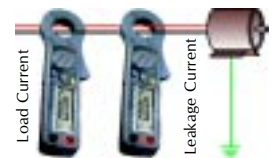
AC Leakage Current of Earth / Ground



Out of Balance Leakage Current



AC Load Current



Leakage Current Tester

Features

- 10μA Ultra High Resolution
- Large Conductor Diameter (30mm)
- AC Current in 5 Ranges (40mA, 400mA, 4A, 40A, 60A)
- Wide Frequency Response (40Hz ~ 1KHz)
- ACA, ACV, Ω and Continuity
- Large 3¾ Digit LCD (4000 Count)
- 40 Segment Fast Bargraph Display (20 times/sec.)
- Data Hold and Max/Min Hold
- Relative Measurement
- 600 Vrms Overload Protection in Resistance Range

General Specifications

Conductor Size	30mm. max. (approx.)
Battery Type	Two 1.5V SUM-3
Display	3¾ LCD with 40 segment Bargraph
Range Selection	Manual
Overload Indication	Left Most Digit Blinks
Power Consumption	10mA (approx.)
Low Battery Indication	B
Sampling Time	2 time/sec. (display) 20 time/sec. (bargraph)
Operating Environment	-10° to 50°C, RH < 85%
Storage Environment	-20°C to 60°C, RH < 75%
Altitude	up to 2000M
Dimensions	210(H)x62(W)x35.6(D) mm
Weight	200gm (battery included)
Accessories	Carrying Case x 1, Users Manual x 1, 1.5V Battery x 2, Test Leads x 1 pair

Specifications (23°C ± 5°C)

AC Current		Accuracy	
Range	Resolution	50/60 Hz	Wide (40Hz ~ 1KHz)
40 mA	10 μA	±(1.0%rdg + 3dgt)	±(2.0%rdg + 5dgt)
400 mA	100 μA		
4 A	1 mA		
40 A	10 mA		
60 A (0-50A)	100 mA	±(1.5%rdg + 3dgt)	±(3.0%rdg + 5dgt)
60 A (50-60A)	100 mA	±(3.0%rdg + 5dgt)	±(3.5%rdg + 5dgt)

Though the Meter can Display upto 400A, the Calibration is valid upto 60A

Resistance (Ω) and Continuity (Open Voltage 0.4V)

Range	Resolution	Accuracy	Beeping	OL Protection
40 ~ 400Ω	0.1Ω	±(1.0%rdg + 2dgt)	< 38.0 Ω	AC 600V

AC Voltage (Input Impedance : 10 MΩ)

Range	Resolution	Accuracy		Overload Protection
		50/60 Hz	40 ~ 1KHz	
400V	0.1V	±(1.5%rdg + 2dgt)	±(2.0%rdg + 4dgt)	AC 800V